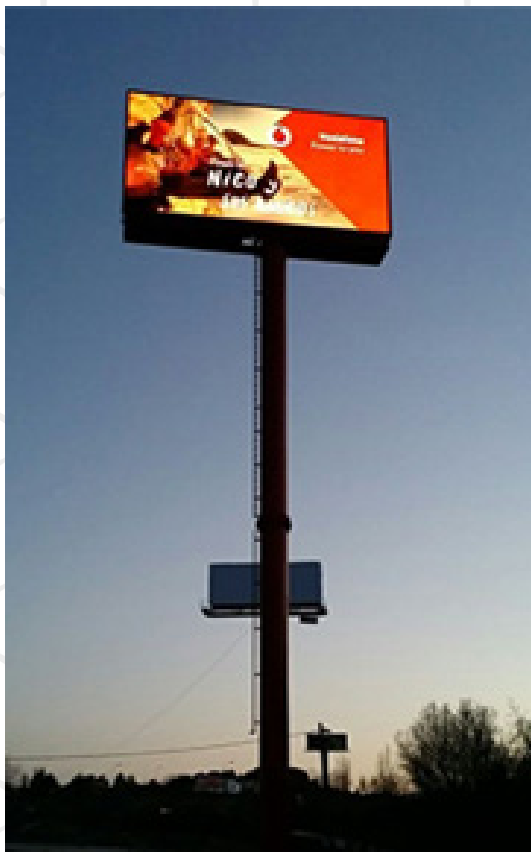




# Styled



## Video led L3.9X

<b>Pixel pitch (mm)</b>	<b>3.91</b>
<b>LED Type</b>	<b>SMD 3 IN 1 – SMD1921</b>
<b>Pixel m2</b>	<b>65536</b>
<b>Panel dimension (mm)</b>	<b>500 (W) x 1000 (H) x 92(D)</b>
<b>Module dimension (mm)</b>	<b>500 (W) x 250 (H)</b>
<b>Panel Res WxH (pixels)</b>	<b>128 x 256</b>
<b>Manufacturing Material</b>	<b>Aluminium Profile</b>
<b>Management Sys</b>	<b>Novastar</b>
<b>Receiving card</b>	<b>Novastar A4S</b>
<b>Panel Weight (Kg)</b>	<b>16</b>
<b>Module Weight</b>	<b>1,57</b>
<b>Refresh Rate (Hz)</b>	<b>1920 - 3840</b>
<b>Gray scale</b>	<b>14 bit</b>
<b>Color gray scale (level)</b>	<b>16384</b>
<b>Driving Type</b>	<b>1/16</b>
<b>Viewing Angle VxH(Deg)</b>	<b>130° / 160°</b>
<b>Brightness</b>	<b>5000 nits</b>
<b>Operating temperature</b>	<b>-30 to 50 (C°)</b>
<b>Working Humidity (RH)</b>	<b>10% - 90% non-condensing</b>
<b>IP Rating</b>	<b>IP65/IP54</b>
<b>Maintenance</b>	<b>Front and back service</b>
<b>Lifetime</b>	<b>100.000 ore</b>
<b>Cabling system</b>	<b>CAT6</b>
<b>Input power frequency</b>	<b>50 - 60 Hz</b>
<b>Input Voltage</b>	<b>100 ~ 240 Volt ±10%</b>
<b>Power Cons. (W/m2)</b>	<b>AWG 175</b>
<b>Power Cons. (W/m2)</b>	<b>Max 350</b>
<b>Cabinet installation type</b>	<b>FIX</b>



## Video led L4.8X

<b>Pixel pitch (mm)</b>	<b>4.8</b>
<b>LED Type</b>	<b>SMD 3 IN 1 – SMD1921</b>
<b>Pixel m2</b>	<b>43.264</b>
<b>Panel dimension (mm)</b>	<b>500 (W) x 1000 (H) x 92(D)</b>
<b>Module dimension (mm)</b>	<b>500 (W) x 250 (H)</b>
<b>Panel Res WxH (pixels)</b>	<b>104 x 208</b>
<b>Manufacturing Material</b>	<b>Aluminium Profile</b>
<b>Management Sys</b>	<b>Novastar</b>
<b>Receiving card</b>	<b>Novastar A4S</b>
<b>Panel Weight (Kg)</b>	<b>16</b>
<b>Module Weight</b>	<b>1,57</b>
<b>Refresh Rate (Hz)</b>	<b>1920 - 3840</b>
<b>Gray scale</b>	<b>14 bit</b>
<b>Color gray scale (level)</b>	<b>16384</b>
<b>Driving Type</b>	<b>1/13</b>
<b>Viewing Angle VxH(Deg)</b>	<b>160° / 120°</b>
<b>Brightness</b>	<b>5000 nits</b>
<b>Operating temperature</b>	<b>-30 to 50 (C°)</b>
<b>Working Humidity (RH)</b>	<b>10% - 90% non-condensing</b>
<b>IP Rating</b>	<b>IP65/IP54</b>
<b>Maintenance</b>	<b>Front and back service</b>
<b>Lifetime</b>	<b>100.000 ore</b>
<b>Cabling system</b>	<b>CAT6</b>
<b>Input power frequency</b>	<b>50 - 60 Hz</b>
<b>Input Voltage</b>	<b>100 ~ 240 Volt ±10%</b>
<b>Power Cons. (W/m2)</b>	<b>AWG 170</b>
<b>Power Cons. (W/m2)</b>	<b>Max 340</b>
<b>Cabinet installation type</b>	<b>FIX</b>



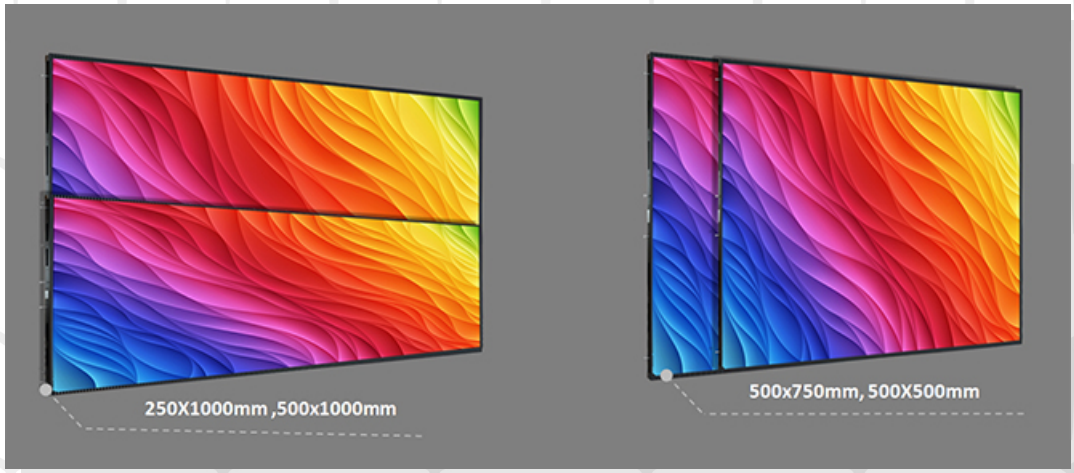
# Video led L5.9X

<b>Pixel pitch (mm)</b>	<b>5.9</b>
<b>LED Type</b>	<b>SMD 3 IN 1 – SMD2727</b>
<b>Pixel m2</b>	<b>28.224</b>
<b>Panel dimension (mm)</b>	<b>500 (W) x 1000 (H) x 92(D)</b>
<b>Module dimension (mm)</b>	<b>500 (W) x 250 (H)</b>
<b>Panel Res WxH (pixels)</b>	<b>84 x 168</b>
<b>Manufacturing Material</b>	<b>Aluminium Profile</b>
<b>Management Sys</b>	<b>Novastar</b>
<b>Receiving card</b>	<b>Novastar A4S</b>
<b>Panel Weight (Kg)</b>	<b>16</b>
<b>Module Weight</b>	<b>1,57</b>
<b>Refresh Rate (Hz)</b>	<b>1920 - 3840</b>
<b>Gray scale</b>	<b>14 bit</b>
<b>Color gray scale (level)</b>	<b>8192 - 32768</b>
<b>Driving Type</b>	<b>1/7</b>
<b>Viewing Angle VxH(Deg)</b>	<b>160° / 120°</b>
<b>Brightness</b>	<b>5500 nits</b>
<b>Operating temperature</b>	<b>-30 to 50 (C°)</b>
<b>Working Humidity (RH)</b>	<b>10% - 90% non-condensing</b>
<b>IP Rating</b>	<b>IP65/IP54</b>
<b>Maintenance</b>	<b>Front and back service</b>
<b>Lifetime</b>	<b>100.000 ore</b>
<b>Cabling system</b>	<b>CAT6</b>
<b>Input power frequency</b>	<b>50 - 60 Hz</b>
<b>Input Voltage</b>	<b>100 ~ 240 Volt ±10%</b>
<b>Power Cons. (W/m2)</b>	<b>AWG 92</b>
<b>Power Cons. (W/m2)</b>	<b>Max 275</b>
<b>Cabinet installation type</b>	<b>FIX</b>

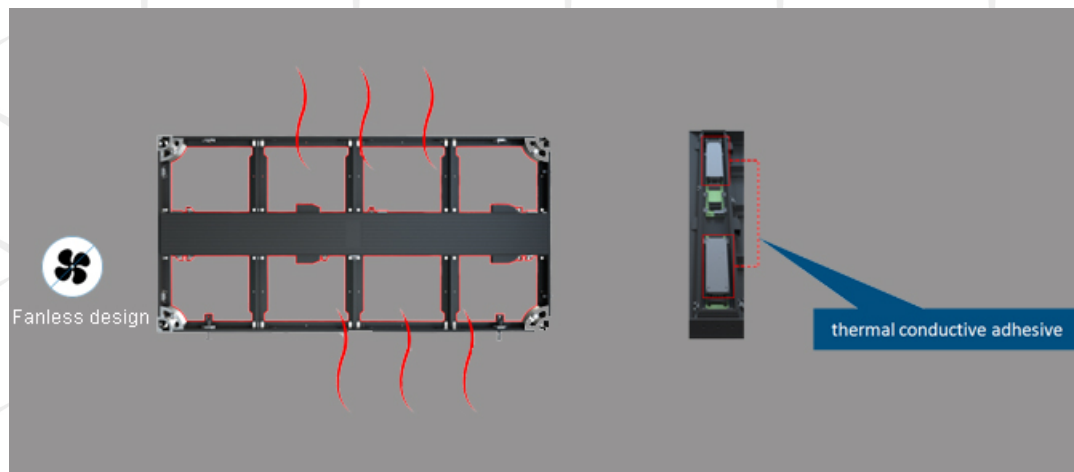




Diversified cabinet size to meet the needs of different scenarios, providing a 500x500mm, 500x750mm, 500x1000mm, 250x1000mm cabinet option



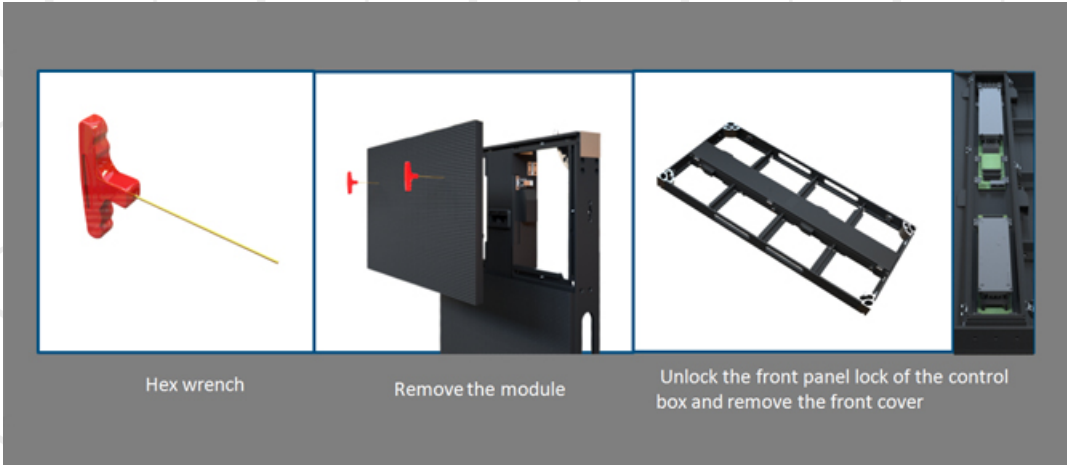
Fanless design , the cabinet is designed with a full hollow structure and a large cooling area, and thus it takes little time for cooling. The thermal conductive adhesive attached to the power supply is in contact with the back cover to accelerate the cooling in the control cabinet.



Waterproof module, reducing the risk of water ingress into the module.



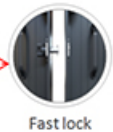
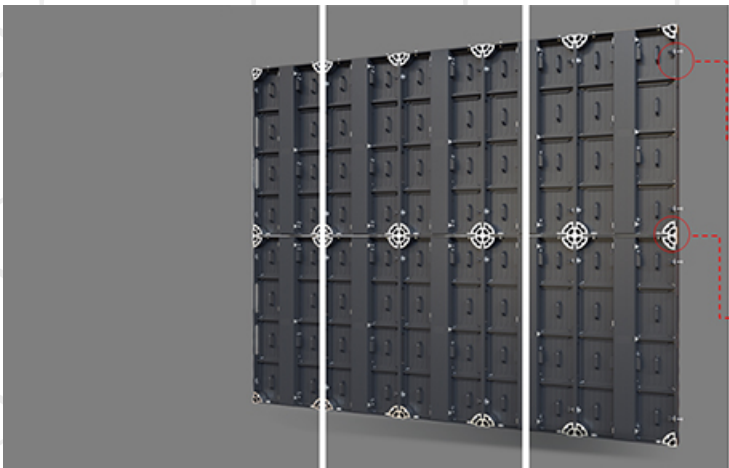
Remove the module, open the front panel buckle of the control box, remove the front panel and the entire large adapter plate (both power supply and card are fixed on the large adapter plate), and unplug the connector to maintain the power supply; remove the fixing screws of the receiving card or adapter plate to maintain the receiving card or adapter plate.



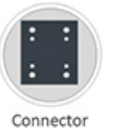
Hex wrench

Remove the module

Unlock the front panel lock of the control box and remove the front cover



Fast lock



Connector

The left and right quick locks between the cabinets are quickly installed. For front installation, both the quick installation with a hanging pin and the installation mode of connecting piece and steel structure are optional. Rear installation comes standard with the cabinet connecting pieces, along with the structural drawings for installation.



**MODSART**

YOUR TECHNOLOGY PARTNER

Commercializzato per l'Italia da Mods Art Srl  
Via Marco Polo 44/46 - 66054 Vasto (CH)  
[www.modsart.it](http://www.modsart.it) - [info@modsart.it](mailto:info@modsart.it)

I prodotti e tutte le informazioni contenute nel presente catalogo potrebbero subire modifiche senza preavviso